

# Developing Resiliency Solutions through Regional Governance and Collaboration

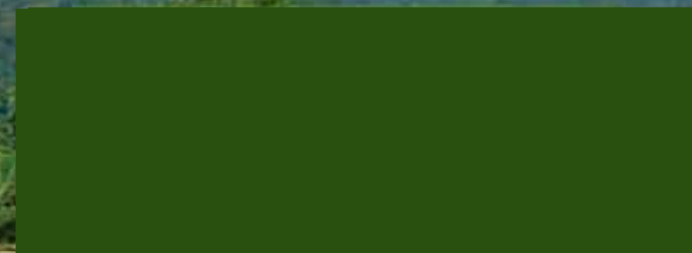
Rebecca Davis,  
Deputy Director







# Strategic Priorities





## **Metro Boston Regional Climate Change Adaptation Strategy Report**

Funding provided by the Federal Sustainable Communities Program and the Barr Foundation



**Revised March 5, 2015**

### **By:**

Metropolitan Area Planning Council  
60 Temple Place  
Boston, MA 02111  
617.933.0700  
[www.mapc.org](http://www.mapc.org)

With assistance from:  
Tellus Institute  
11 Arlington St.  
Boston, MA 02116



# Metropolitan-Boston Regional Climate Change Adaptation Strategy



# Regional Climate Change Strategy : Objectives

Sector	Subtopic	Objectives
<b>Built Environment</b>	Development, Green Infrastr., Tree Canopy	1) New development/redevelopment designed to adapt to climate impacts (heat, precipitation, etc.)
	Development	2) Redevelopment located outside of the highest hazard areas
<b>Natural Resources</b>	Protection	3) Natural functions of ecosystems, shorelines and critical habitat areas will be restored
	Management	4) Conserve and manage habitats to support healthy fish, wildlife and plant populations and ecosystem functions
	Restoration	5) Restore ecosystem processes to increase capacity to adapt
<b>Coastal Zone</b>	Protection, Storm Assess.	6) Coastal areas resilient to climate change impacts
<b>Key Infrastructure</b>	Energy, Water/WW/SW, Transportation, Green Infrastructure	7) Resilient transportation, water/wastewater, and energy infrastructure
	Roads & Crossings	8) All existing tide and flood control structures assessed for flood control
<b>Local Govt./ Econ.</b>	Asset Mgmt & Capacity	9) Local and regional asset management preparation and monitoring
<b>Human Health &amp; Welfare</b>	Vector Diseases, Vulnerable Populations	10) A public protected from extreme climate change health impacts, with particular focus on vulnerable populations

# Metro Mayors Coalition



**14 Municipalities**

**Nearly 1.4 million (2010 Census); 43% of the MAPC region population**

**150 square miles, roughly 10% of the MAPC region land area**



Data Source: MAPC, MassGIS  
March, 2015

# Winter 2015

Boston, Massachusetts Annual total snowfall: **110.3"**  
(Boston Globe, 3/22/15))



# Metro Mayors Coalition Climate Preparedness Commitment



May 2015: Metro Mayors Coalition convened to sign a Climate Preparedness Commitment.

Participating agencies:

- Executive Office of Energy & Environmental Affairs
- Executive Office for Housing & Economic Development
- MassDOT
- MWRA
- Massport
- EPA Region I



**Metro Mayors Coalition Climate Preparedness Summit: May 13, 2015**



# Metro Mayors Coalition Climate Preparedness Taskforce



The Coalition launched a Taskforce to address vulnerabilities in the region's shared critical infrastructure.

The Taskforce is working to:

- help to coordinate a regional and cross-governmental effort,
- ensure coordination and integration of existing and planned mitigation and resiliency work, to optimize the outcomes of both efforts,
- work fairly, equitably, and inclusively to ensure that vulnerable populations have access to protective measures and adaptive capacity in the face of climate change.



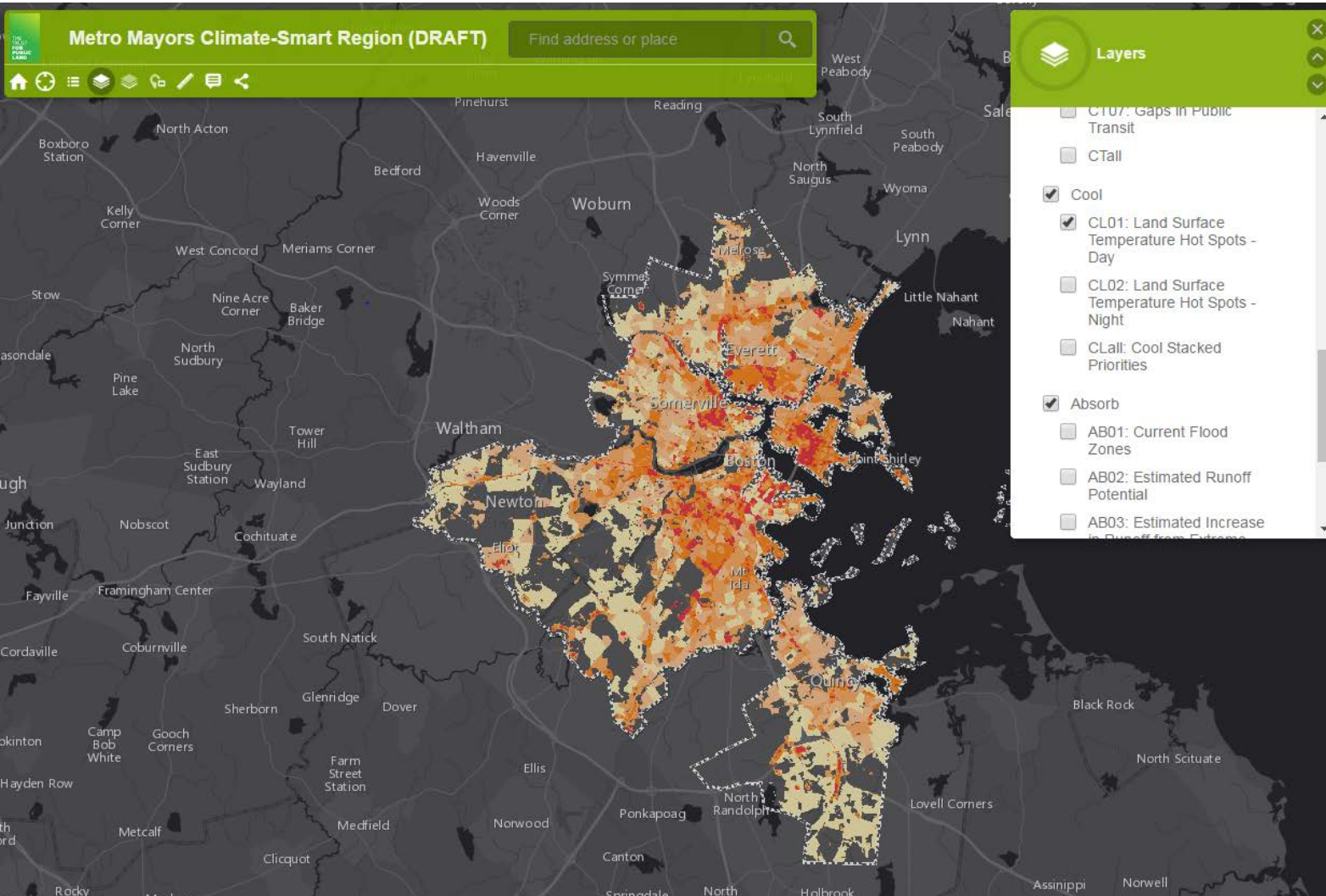
**Metro Mayors Coalition Climate Preparedness Summit: May 13, 2015**

# Climate Preparedness Taskforce Priority Areas for 2016

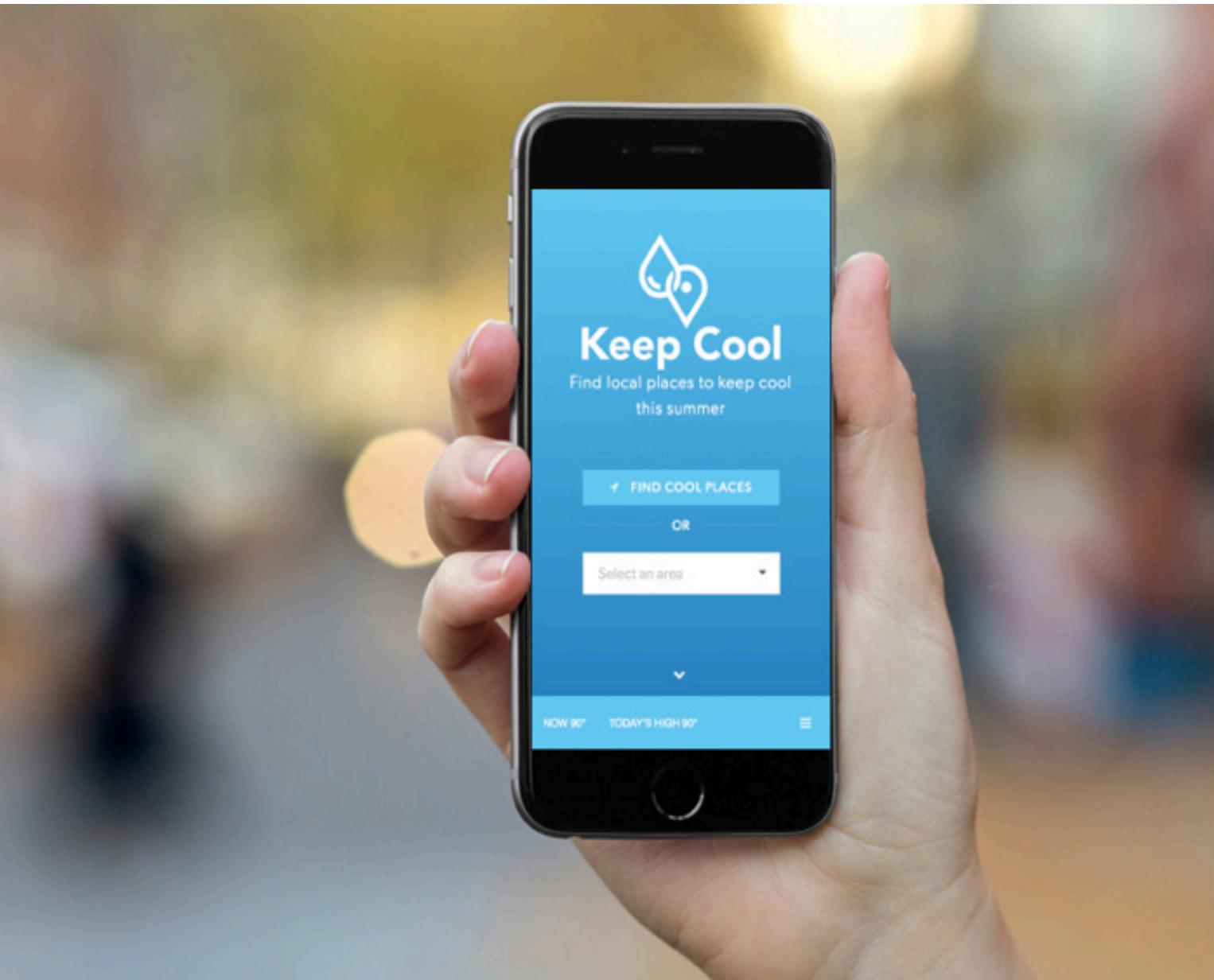


Local Capacity Building	Vulnerability Assessments
	Knowledge Sharing & Training
Regional Focus	<b>Flooding from Storm Events:</b> Food Distribution Centers in Chelsea and Everett
	<b>Urban Heat Island Effect:</b> Green Infrastructure & Emergency Preparedness for Extreme Heat
	Overarching

# Trust for Public Land Collaboration



## Metro Mayors Climate Smart Region Program



The Keep Cool App provides residents with a tool to locate nearby places for keeping cool in the summer.

[KeepCool.mapc.org](https://KeepCool.mapc.org)



# Climate Vulnerability Research of Regional Food Distribution Centers in Chelsea and Everett

in collaboration with the American Geophysical Union and UMass Boston



# Next Steps for the Metro Mayors Coalition and Taskforce



- Priority Setting for 2017
- Building a Policy Agenda
- Ensuring communication and climate adaptation coordination across different public agencies and private companies that own or manage regional infrastructure
- Partnership with the Urban Land Institute (ULI) to utilize the MAPC-TPL GIS Decision-Support Tool for Resiliency Planning in Private Development Projects
- MassBuilds Relaunch

**Thank You.**

**Rebecca Davis,  
Deputy Director**

